

Project: **3-D modelling of tailing piles at potash mining “Sigmundshall”**

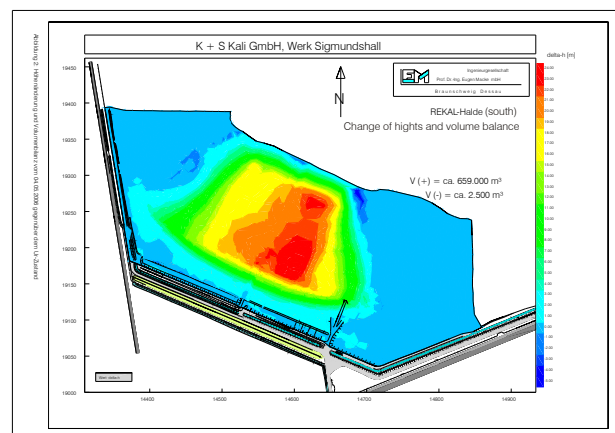
Client: K + S KALI GmbH
Tienberg 25
31515 Wunstorf
Germany

Date: 1997 - approx. 2021



Project description:

The tailing pile of the potash mine “Sigmundshall” is covered with REKAL-material since 1997. Due to dissolution processes and gravity influences the surface of the covered body changes within time. To survey the changes of the tailing pile a simple and low cost method was developed which is described in the figure below. As from 2007 the survey method will be optimized using a non reflector laser based measurement.



Services:

- Semi-annual surveying of the tailing pile
- Determination of the volume alteration

