

Project: **Construction of a storm water overflow basin**

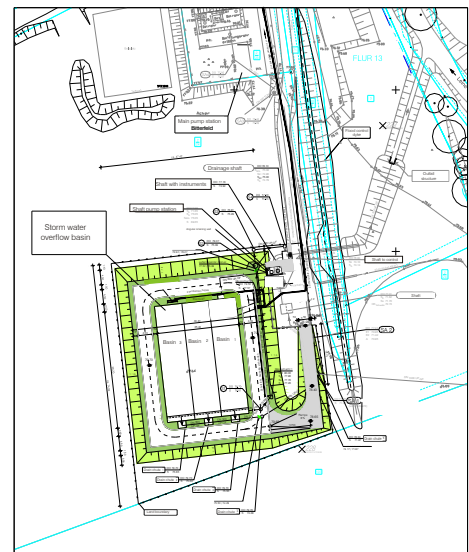
Client: Abwasserzweckverband
"Westliche Mulde"
AZV Berliner Straße 6
06749 Bitterfeld
Germany

Project value: 850,000 €

Date: 2004 - 2005

Project description:

The combined sewerage of the city of Bitterfeld was overloaded. It was necessary to design a new basin at the existing storm water overflow to reduce the water body pollution. The final structure was projected after running a computer simulation for pollution load calculation in order to get the basic information about the basin volume.



Services:

HOAI § 55, 73 LP 1 - 9, § 57, § 6 (German regulation for engineers), construction design, coordination, foundation exploration, structural planning, electrical equipment, site supervision



Parameter:

- Basin volume approx. 2,500 m³
- 3 chambers à approx. 10 x 30 x 2,8 m
- Reinforced concrete with fibre glass dome structure
- Pump station, flow rate 450 l/s with discharge controlled outlet gate